



Lexan® Hardcoated Polycarbonate
 VStream® Windscreen
 Z2370 Dark Tint, Low
 Z2371 Light Tint, Mid
 Z2372 Clear, Tall for BMW S1000XR

Thank you for purchasing a ZTechnik product. Read these instructions carefully and thoroughly before beginning work. Dealers, if installing this windscreen for a customer, please give them this manual. It contains information needed to properly maintain and use this product.



Attention:

Special notes and cautionary measures which can prevent damage to the accessory or motorcycle.



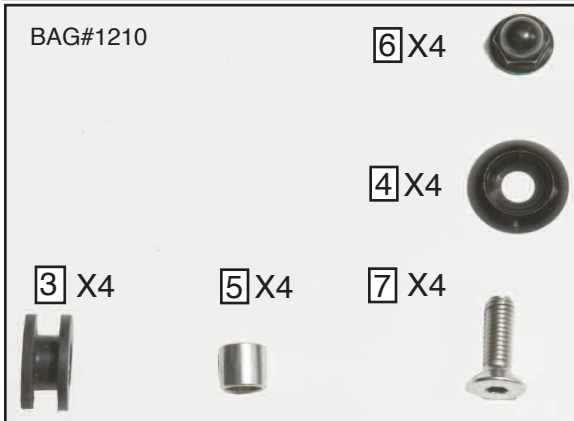
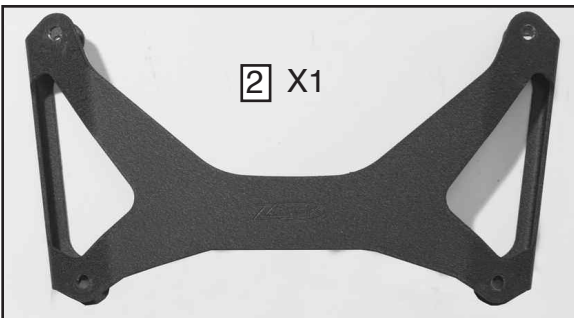
Note:

Tips for facilitation of operation, control and adjustment, as well as maintenance work.

CONTENTS OF KIT

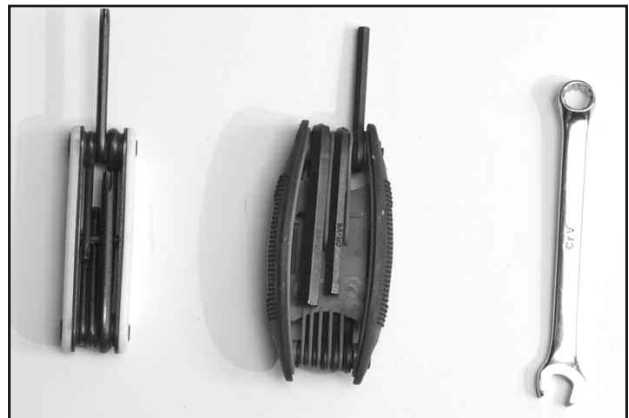
Item	Description	Part No.	Qty.	Notes
1	VStream® Windscreen		1	Not shown, part number will vary depending on size.
2	Bracket	37-374477-000	1	
Bag #1210				
3	Grommet	44-447350-000	4	
4	Cap, Aluminum, Black	34-346047-000	4	
5	Collar, Stainless, L.354	49-495592-000	4	
6	Nut, Hex Cap, M6	42-483005-000	4	10mm Box Wrench
7	Screw, M6 x 20 Stainless	51-514221-000	4	4mm Hex Key

PART IDENTIFICATION



TOOLS

T25 Torx Wrench, for OEM Screw
 4mm Hex Key
 10mm Box Wrench



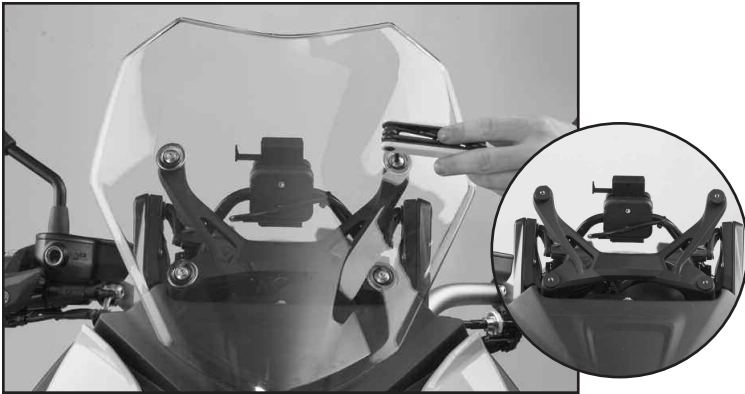


Figure 1

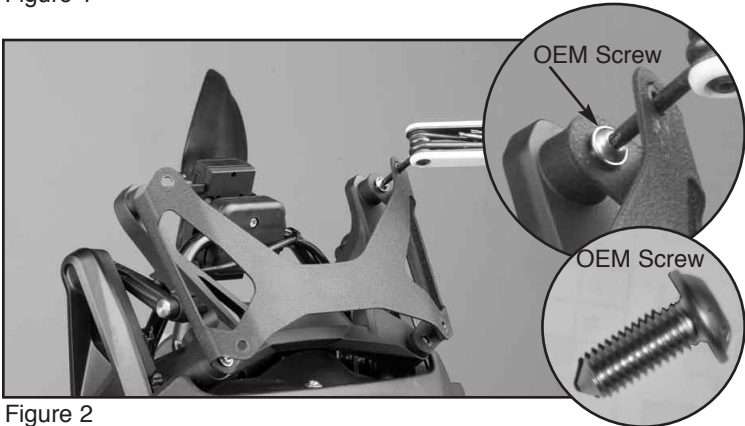


Figure 2



Figure 3

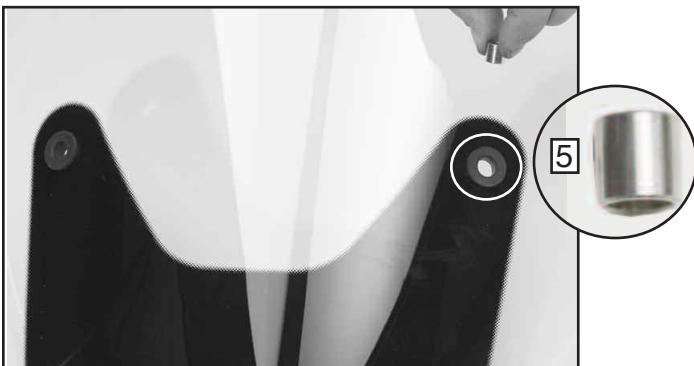


Figure 4

PREPARATION

1. Place motorcycle securely on its centerstand.
2. Remove the stock windscreen. The 4 OEM screws will be re-used. **Figure 1**

INSTALLATION

1. Use the 4 OEM Screws (MS flange head torx) to install the Bracket (2). **Figure 2 (T25 Torx)**

2. Install one Grommet (3) into each of the 4 holes on windshield. **Figure 3**

3. Insert 1 Bushing (5), into the hole of each of the 4 Grommets (3). **Figure 4**

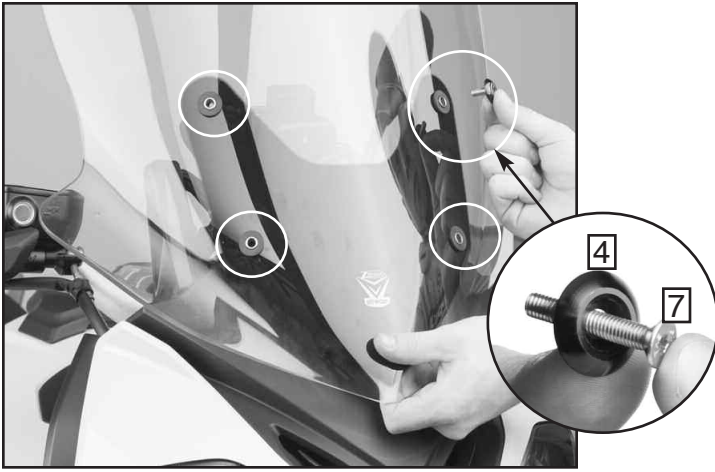


Figure 5

INSTALL WINDSHIELD

4. Assemble a M6 Flat Screw (7) and Cap (4) as shown. Install Windshield to Bracket (2) using this assembly, and a Cap Nut (6). The Cap Nut (6) is to be installed on the back side of Bracket. Repeat procedure at all 4 holes. **Figure 5 and 6 (4mm Hex Key, 10mm Box Wrench)**

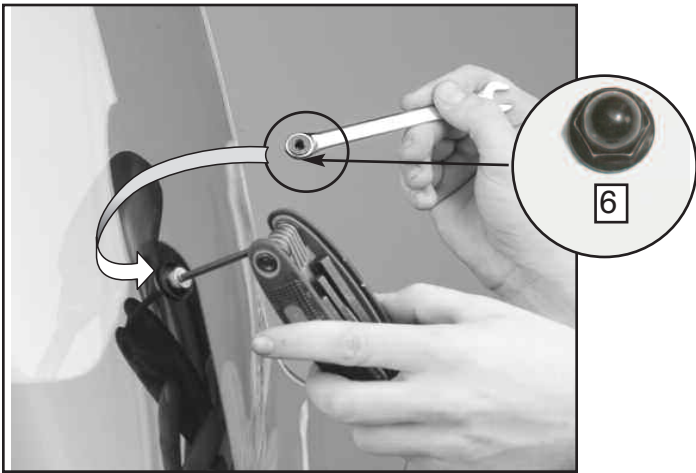


Figure 6

5. Tighten screws firmly (48 In-Lbs or 5 Nm). **Figure 6 (4mm Hex Key, 10mm Box Wrench)**





Ask for Shield Wash™ and RainZip® at your local dealer or visit www.ztechnik.com.

CLEANING AND MAINTENANCE

To clean the screen, wash with a clean soft cloth, plenty of warm water and if necessary, a non-abrasive soap such as dishwashing liquid. Flannel or soft chamois make good cleaning cloths. **Paint, glue residue or grease removal:** Moisten cotton with naphtha or turpentine followed by a wash as above.

National Cycle **Shield Wash™** (N1401-01) makes a good daily cleaner and comes with a handy travel size bottle. Shield Wash is safe for all windshields and helmet visors.

Do not clean polycarbonate in hot sun or high temperatures. Do not clean the screen with glass cleaners.

Do not allow brake fluid, alcohol, or strong solvents to contact the screen.

RAIN REPELLENT

Do not use rain protective products made for automotive glass. We recommend National Cycle's **RainZip®** (N1410-01) to keep your windshield clear in rainy weather.



Register your windshield online at www.ZTechnik.com

ZTechnik 3-Year Limited Warranty

ZTechnik hereby warrants to the original registered owner of a ZTechnik polycarbonate windshield for a period of three years from the date of purchase against breakage. This limited warranty is expressly limited to the replacement of the polycarbonate windscreen. This limited warranty does not include scratches, coating failure, cosmetic wear and tear, replacement of hardware, or any consequential damages or expenses including labor cost of installation, removal and/or replacement, inconvenience, inbound freight expenses or damage to any other component of the motorcycle or any other accessories. Certain chemicals, generally known as acidic hydrocarbons, are known to cause polycarbonate damage and will not be covered under this limited warranty. Please refer to the cleaning instructions supplied with all ZTechnik windshields.

Visit www.ztechnik.com for further details, or call or write ZTechnik / PO Box 158 / Maywood, IL 60153 / 708-3430400

⚠ WARNING

Never ride your motorcycle with loose accessory mounting hardware. Check the hardware for tightness regularly.

Today's motorcycles are built with enough frame rigidity to withstand the moderate loads imposed on them by the foreseeable addition of an accessory(ies). If an accessory(ies) adversely affects your motorcycle's stability, immediately remove the accessory(ies). Do not ride a motorcycle that exhibits unsafe handling traits.

Have experienced service personnel correct any problem before riding with the accessory(ies) installed. For further questions concerning handling problems associated with an accessory(ies), contact your dealer, motorcycle manufacturer, or accessory manufacturer.

Sunlight reflected off the inside curvature of the windscreen can, at certain times of day, cause extreme heat buildup on the motorcycle's instruments and possibly even melt them. Exercise care in parking to avoid this. Park your motorcycle facing the sun or place an opaque object over this area.

VStream® windscreen patent no. 7,387,328

ZTechnik PO Box 158 Maywood, IL 60153-0158 USA

708-343-0400 / Fax: 708-343-0625 / www.ztechnik.com / e-mail: info@ztechnik.com